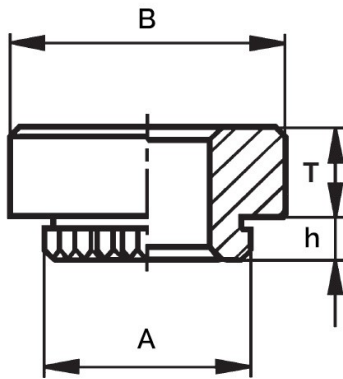


**DADI PER CIRCUITI STAMPATI**  
**SELF-CLINCHING NUTS FOR PC BOARDS**  
**ÉCROUS BROCHER POUR CARTES PC**  
**EINPRESSMUTTERN FÜR LEITERPLATTEN**  
**TUERCAS PARA CIRCUITOS IMPRESOS**



| Thread size x pitch | Thread size | T       | A       | B       | Hole Size | h   | Min. Sheet Thickness | Minimum distance center-edge |
|---------------------|-------------|---------|---------|---------|-----------|-----|----------------------|------------------------------|
| M4x0,7              | M4          | +/-0.13 | +/-0.08 | +/-0.13 | +0.08     | Max | 1,5                  | 6,4                          |

**MATERIAL:** ELECTRO TIN PLATED STEEL

Disegno di proprietà della Fixi S.r.l. - Non può essere copiato, riprodotto o comunicato a terze persone senza autorizzazione.  
 Drawing owned by Fixi S.r.l.- It cannot be copied, reproduced or communicated to third parties without permission.

**Disegnato da / Designed by:** Ufficio Tecnico  
**Ufficio Tecnico / Tech Office:** tech@fixi.it

05/04/2026

**CODICE PRODOTTO / PART NUMBER**

15CKF2M4

**FIXI**<sup>®</sup>

FIXI s.r.l. Via Bellardi 40/A  
 10146 - Torino (Italy)  
 www.fixi.it - info@fixi.it