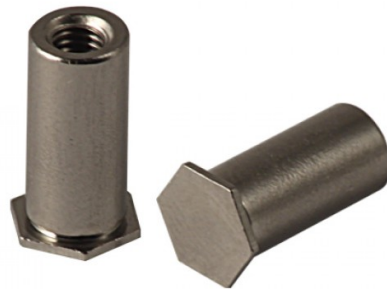


**COLONNINE AUTOFISSANTI FILETTO CIECO PER LAMIERA**  
**BLIND THREADED SELF-CLINCHING STANDOFFS FOR SHEET METAL**  
**COLONNETTES À SERTIR POUR TÔLE**  
**EINPRESSGEWINDEBUCHSEN FÜR BLECH**  
**COLUMNAS AUTOINSERTABLES PARA CHAPA**



| Thread size<br>x pitch | B   | Hole Size<br>+0.08 | G<br>-0.13 | L  | N   | I<br>+/-0.13 | Min. Sheet<br>Thickness | Minimum<br>distance<br>center-edge |
|------------------------|-----|--------------------|------------|----|-----|--------------|-------------------------|------------------------------------|
| M5x0.8                 | 7.9 | 7.2                | 7.11       | 25 | 9.5 | 5.2          | 1.3                     | 8                                  |

**MATERIAL:** 400 SERIES STAINLESS STEEL

sheet hardness max 90 HRB

Disegno di proprietà della Fixi S.r.l. - Non può essere copiato, riprodotto o comunicato a terze persone senza autorizzazione.  
 Drawing owned by Fixi S.r.l.- It cannot be copied, reproduced or communicated to third parties without permission.

**Disegnato da / Designed by:** Ufficio Tecnico  
**Ufficio Tecnico / Tech Office:** tech@fixi.it

10/06/2026

**CODICE PRODOTTO / PART NUMBER**

15CFBSOSM5-25A4

**FIXI®**

FIXI s.r.l. Via Bellardi 40/A  
 10146 - Torino (Italy)  
 www.fixi.it - info@fixi.it