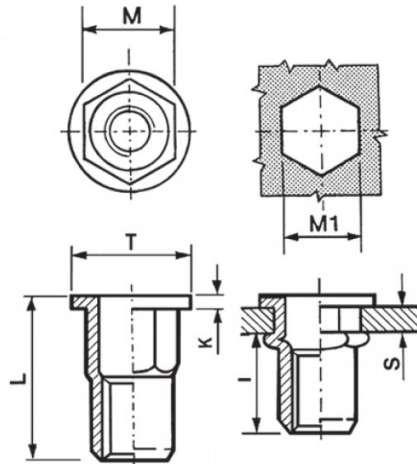




**INSERTI FILETTATI SEMIESAGONALI INOX A4 - TESTA TONDA**  
**SEMI-HEXAGONAL A4 STAINLESS STEEL THREADED INSERTS - FLAT HEAD**  
**INSERTS FILETÉS CRANTÉS CYLINDRIQUES ACIER INOX A4- TÊTE CYLINDRIQUE**  
**BLINDNIETMUTTERN TEILSECHSKANT EDELSTAHL A4 - FLACHKOPF**  
**TUERCAS REMACHABLES SEMI-HEXAGONALES INOX A4 - CABEZA PLANA**



|  | S         | M               | M1       | T         | K          | L         | I  |  |
|---|-----------|-----------------|----------|-----------|------------|-----------|----|---|
|   | GRIP      | $\pm 0,07/-0,1$ | $0,1/-0$ | $\pm 0,5$ | $\pm 0,15$ | $\pm 0,5$ | ~  |   |
| M12   | 1,0 - 4,0 | 15,9            | 16       | 23        | 2          | 28        | 18 | 80  |

**MATERIAL: STAINLESS STEEL A4**

Disegno di proprietà della Fixi S.r.l. - Non può essere copiato, riprodotto o comunicato a terze persone senza autorizzazione.  
 Drawing owned by Fixi S.r.l.- It cannot be copied, reproduced or communicated to third parties without permission.

**Disegnato da / Designed by:** Ufficio Tecnico  
**Ufficio Tecnico / Tech Office:** tech@fixi.it

14/05/2026

**CODICE PRODOTTO / PART NUMBER**

85IXA4ITTSEM12C16

**FIXI®**

FIXI s.r.l. Via Bellardi 40/A  
 10146 - Torino (Italy)  
 www.fixi.it - info@fixi.it