

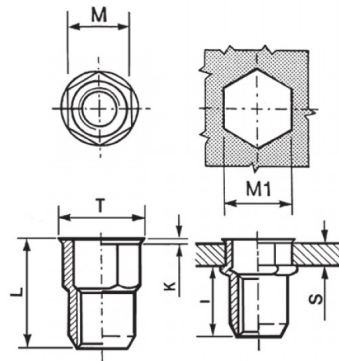
**INSERTI FILETTATI SEMIESAGONALI INOX A4 - TESTA RIDOTTA**



**SEMI-HEXAGONAL A4 STAINLESS STEEL THREADED INSERTS - REDUCED COUNTERSUNK HEAD**

**INSERTS FILETÉS SEMI-HEXAGONAUX ACIER INOX A4 - TÊTE RÉDUITE**

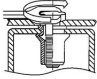
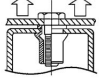
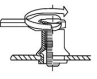
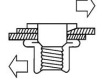
**BLINDNIETMUTTERN TEILSECHSKANT EDELSTAHL A4 - KLEINER SENKKOPF**

**TUERCAS REMACHABLES SEMI-HEXAGONALES INOX A4 - CABEZA REDUCIDA**



	S GRIP	M	M1 0,1/-0	T +/-0,5	K +/-0.15	L +/-0,5	I ~	
M10	1,0 - 4,0	12,9	13	14,5	0,75	21	14	32

**MATERIAL: STAINLESS STEEL A4**

 MAX TIGHTENING TORQUE (Nm) 32	 PULL-OUT FORCE (N) 3200	 TORQUE TO TURN (Nm) 8,5	 SHEAR FORCE (N) 5000
--	--	--	---

Disegno di proprietà della Fixi S.r.l. - Non può essere copiato, riprodotto o comunicato a terze persone senza autorizzazione.  
Drawing owned by Fixi S.r.l.- It cannot be copied, reproduced or communicated to third parties without permission.

**Disegnato da / Designed by:** Ufficio Tecnico  
**Ufficio Tecnico / Tech Office:** tech@fixi.it

14/05/2026

**CODICE PRODOTTO / PART NUMBER**

85IXA4IERSEM10C13

**FIXI®**

FIXI s.r.l. Via Bellardi 40/A  
10146 - Torino (Italy)  
www.fixi.it - info@fixi.it