

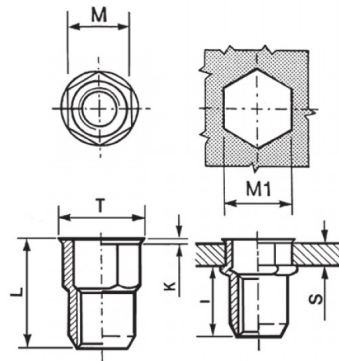
**INSERTI FILETTATI SEMIESAGONALI INOX A4 - TESTA RIDOTTA**



**SEMI-HEXAGONAL A4 STAINLESS STEEL THREADED INSERTS - REDUCED COUNTERSUNK HEAD**

**INSERTS FILETÉS SEMI-HEXAGONAUX ACIER INOX A4 - TÊTE RÉDUITE**

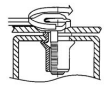
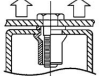
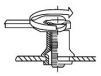
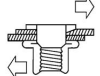
**BLINDNIETMUTTERN TEILSECHSKANT EDELSTAHL A4 - KLEINER SENKKOPF**

**TUERCAS REMACHABLES SEMI-HEXAGONALES INOX A4 - CABEZA REDUCIDA**



	<b>S</b> GRIP	<b>M</b>	<b>M1</b> 0,1/-0	<b>T</b> +/-0,5	<b>K</b> +/-0.15	<b>L</b> +/-0,5	
M12	1,0 - 4,0	15,9	16	17,5	0,8	24	50

**MATERIAL: STAINLESS STEEL A4**

			
MAX TIGHTENING TORQUE (Nm) 50	PULL-OUT FORCE (N) 34000	TORQUE TO TURN (Nm) 24	SHEAR FORCE (N) 6500

Disegno di proprietà della Fixi S.r.l. - Non può essere copiato, riprodotto o comunicato a terze persone senza autorizzazione.  
Drawing owned by Fixi S.r.l.- It cannot be copied, reproduced or communicated to third parties without permission.

**Disegnato da / Designed by:** Ufficio Tecnico  
**Ufficio Tecnico / Tech Office:** tech@fixi.it

14/05/2026

**CODICE PRODOTTO / PART NUMBER**

85IXA4IERSEM12C16

**FIXI®**

FIXI s.r.l. Via Bellardi 40/A  
10146 - Torino (Italy)  
www.fixi.it - info@fixi.it