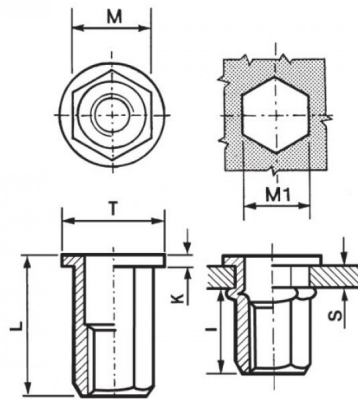


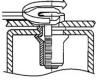
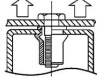
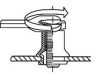
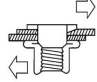


**INSERTI FILETTATI ESAGONALI TESTA TONDA**  
**HEXAGONAL FLAT HEAD THREADED INSERTS**  
**FLACHKOPF BLINDNIETMUTTERN SECHSKANTSCHAFT**  
**INSERTS FILETÉS HEXAGONAUX TÊTE CYLINDRIQUE**  
**TUERCAS REMACHABLES HEXAGONALES CABEZA PLANA**



|   |             |                        |                      |                    |                     |          |               |   |
|---|-------------|------------------------|----------------------|--------------------|---------------------|----------|---------------|---|
|  | <b>GRIP</b> | <b>M</b><br>+0,07/-0,1 | <b>M1</b><br>+0,1/-0 | <b>T</b><br>+/-0,5 | <b>K</b><br>+/-0,15 | <b>L</b> | <b>I</b><br>~ |  |
| M10   | 1,0-3,5     | 12,9                   | 13                   | 18                 | 1,7                 | 21       | 12,5          | 50  |

**MATERIAL: STAINLESS STEEL A2**

|   |   |   |   |
|---|---|---|---|
|  |  |  |  |
| <b>MAX TIGHTENING TORQUE (Nm)</b><br>50   | <b>PULL-OUT FORCE (N)</b><br>32000  | <b>TORQUE TO TURN (Nm)</b><br>11  | <b>SHEAR FORCE (N)</b><br>5000  |

Disegno di proprietà della Fixi S.r.l. - Non può essere copiato, riprodotto o comunicato a terze persone senza autorizzazione.  
 Drawing owned by Fixi S.r.l.- It cannot be copied, reproduced or communicated to third parties without permission.

**Disegnato da / Designed by:** Ufficio Tecnico  
**Ufficio Tecnico / Tech Office:** tech@fixi.it

24/05/2025

**CODICE PRODOTTO / PART NUMBER**

85IXITTEM10C13

**FIXI®**

FIXI s.r.l. Via Bellardi 40/A  
 10146 - Torino (Italy)  
 www.fixi.it - info@fixi.it