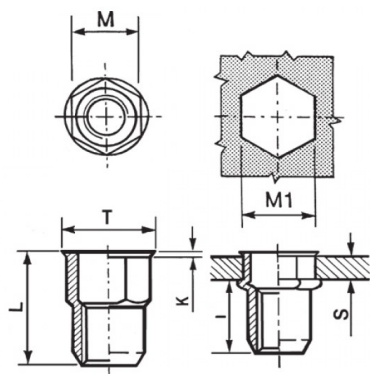




**INSERTI FILETTATI SEMIESAGONALI ACCIAIO - TESTA RIDOTTA**  
**SEMI-HEXAGONAL STEEL THREADED INSERTS - REDUCED COUNTERSUNK HEAD**  
**INSERTS FILETÉS SEMI-HEXAGONAUX ACIER - TÊTE RÉDUITE COURT**  
**BLINDNIETMUTTERN TEILSECHSKANT STAHL - KLEINER SENKKOPF**  
**TUERCAS REMACHABLES SEMI-HEXAGONALES ACERO - CABEZA REDUCIDA**

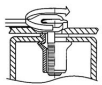
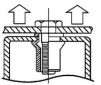
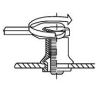
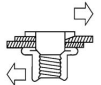


K dopo la posa  
K after setting



|   |                  |                       |                      |                    |                     |                    |               |   |
|---|------------------|-----------------------|----------------------|--------------------|---------------------|--------------------|---------------|---|
|  | <b>S</b><br>GRIP | <b>M</b><br>+0,07-0,1 | <b>M1</b><br>+0,1/-0 | <b>T</b><br>+/-0,5 | <b>K</b><br>+/-0,15 | <b>L</b><br>+/-0,5 | <b>I</b><br>~ |  |
| M5  | 0.5 - 2.5        | 6.9                   | 7                    | 8                  | 0.5                 | 13                 | 8.7           | 6   |

**MATERIAL:** STEEL ZINC PLATED CR III

|   |   |  |   |
|---|---|--|---|
| <br>MAX TIGHTENING<br>TORQUE (Nm)<br>6 | <br>PULL-OUT<br>FORCE (N)<br>11500 | <br>TORQUE TO<br>TURN (Nm)<br>1,5 | <br>SHEAR<br>FORCE (N)<br>2000 |
|---|---|--|---|

Disegno di proprietà della Fixi S.r.l. - Non può essere copiato, riprodotto o comunicato a terze persone senza autorizzazione.  
Drawing owned by Fixi S.r.l.- It cannot be copied, reproduced or communicated to third parties without permission.

Disegnato da / Designed by: Ufficio Tecnico  
Ufficio Tecnico / Tech Office: tech@fixi.it

14/05/2026

**CODICE PRODOTTO / PART NUMBER**

**85ACIERSEM05C**

**FIXI®**

FIXI s.r.l. Via Bellardi 40/A  
10146 - Torino (Italy)  
www.fixi.it - info@fixi.it