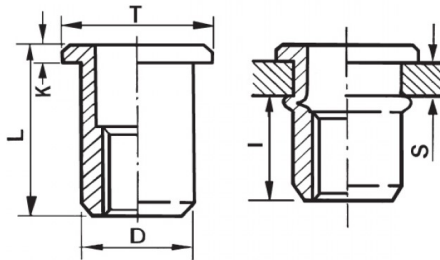





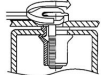
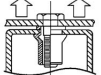
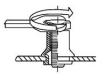
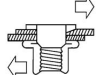
**INSERTI FILETTATI CILINDRICI - TESTA TONDA**  
**CYLINDRICAL THREADED INSERTS - FLAT HEAD**  
**INSERTS FILETÉS CYLINDRIQUES - TÊTE CYLINDRIQUE**  
**BLINDNIETMUTTERN RUNDSCHAFT - FLACHKOPF**  
**TUERCAS REMACHABLES CILINDRICAS - CABEZA PLANA**



**ZIGRINATO SOTTO LA TESTA**  
**KNURLED UNDERNEATH THE HEAD**

|  | <b>S</b><br>GRIP | <b>D</b><br>+0,07/-0,1 | <br>+0,1/-0 | <b>T</b><br>+/-0,5 | <b>K</b><br>+/-0,15 | <b>L</b><br>+/-0,5 | <b>I</b><br>~ |  |
|---|------------------|------------------------|--|--------------------|---------------------|--------------------|---------------|---|
| M10   | 0.8 - 3.5        | 11.9                   | 12   | 16                 | 1.7                 | 19                 | 10.5          | 50  |

**MATERIAL: STAINLESS STEEL A2**

|  |   |   |   |
|--|---|---|---|
| <br>MAX TIGHTENING<br>TORQUE (Nm)<br>50 | <br>PULL-OUT<br>FORCE (N)<br>32000 | <br>TORQUE TO<br>TURN (Nm)<br>11 | <br>SHEAR<br>FORCE (N)<br>5000 |
|--|---|---|---|

Disegno di proprietà della Fixi S.r.l. - Non può essere copiato, riprodotto o comunicato a terze persone senza autorizzazione.  
 Drawing owned by Fixi S.r.l.- It cannot be copied, reproduced or communicated to third parties without permission.

**Disegnato da / Designed by:** Ufficio Tecnico  
**Ufficio Tecnico / Tech Office:** tech@fixi.it

14/05/2026

**CODICE PRODOTTO / PART NUMBER**

85IXITTM10C12

**FIXI®**

FIXI s.r.l. Via Bellardi 40/A  
 10146 - Torino (Italy)  
 www.fixi.it - info@fixi.it