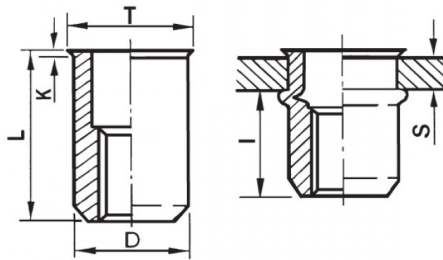





INSERTI FILETTATI CILINDRICI - TESTA RIDOTTA
CYLINDRICAL THREADED INSERTS - REDUCED COUNTERSUNK HEAD
INSERTS FILETÉS CYLINDRIQUES - TÊTE RÉDUITE
BLINDNIETMUTTERN RUNDSCHAFT - KLEINER SENKKOPF
TUERCAS REMACHABLES CILINDRICAS - CABEZA REDUCIDA

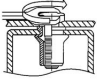
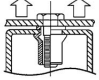
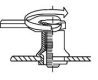
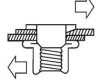


K dopo la posa
K after setting



	S	D		T	K	L	I	
	GRIP	+0,07/-0,1	+0,1/-0	+/-0,5	+/-0,15	+/-0,5	~	
M4	0.5 - 2	5.9	6	7	0.5	10.5	6.5	3

MATERIAL: STAINLESS STEEL A2

 MAX TIGHTENING TORQUE (Nm) 3	 PULL-OUT FORCE (N) 6800	 TORQUE TO TURN (Nm) 0,8	 SHEAR FORCE (N) 1500
---	--	--	---

Disegno di proprietà della Fixi S.r.l. - Non può essere copiato, riprodotto o comunicato a terze persone senza autorizzazione.
 Drawing owned by Fixi S.r.l.- It cannot be copied, reproduced or communicated to third parties without permission.

Disegnato da / Designed by: Ufficio Tecnico
 Ufficio Tecnico / Tech Office: tech@fixi.it

14/05/2026

CODICE PRODOTTO / PART NUMBER

85IXITRM04C

FIXI®

FIXI s.r.l. Via Bellardi 40/A
 10146 - Torino (Italy)
 www.fixi.it - info@fixi.it