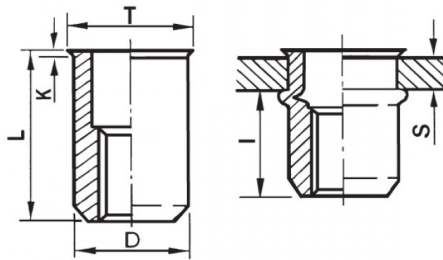





**INSERTI FILETTATI CILINDRICI - TESTA RIDOTTA**  
**CYLINDRICAL THREADED INSERTS - REDUCED COUNTERSUNK HEAD**  
**INSERTS FILETÉS CYLINDRIQUES - TÊTE RÉDUITE**  
**BLINDNIETMUTTERN RUNDSCHAFT - KLEINER SENKKOPF**  
**TUERCAS REMACHABLES CILINDRICAS - CABEZA REDUCIDA**

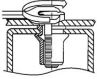
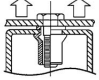
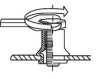
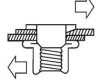


K dopo la posa  
K after setting



	S GRIP	D +0,07/-0,1		T +/-0,5	K +/-0,15	L +/-0,5	I ~	
M10	0.8 - 3	11.9	12	13.5	0.8	18	11.2	32

**MATERIAL: STAINLESS STEEL A2**

 MAX TIGHTENING TORQUE (Nm) 32	 PULL-OUT FORCE (N) 32000	 TORQUE TO TURN (Nm) 8,5	 SHEAR FORCE (N) 5000
--	---	--	---

Disegno di proprietà della Fixi S.r.l. - Non può essere copiato, riprodotto o comunicato a terze persone senza autorizzazione.  
Drawing owned by Fixi S.r.l.- It cannot be copied, reproduced or communicated to third parties without permission.

Disegnato da / Designed by: Ufficio Tecnico  
Ufficio Tecnico / Tech Office: tech@fixi.it

14/05/2026

**CODICE PRODOTTO / PART NUMBER**

85IXITRM10C12

**FIXI®**

FIXI s.r.l. Via Bellardi 40/A  
10146 - Torino (Italy)  
www.fixi.it - info@fixi.it