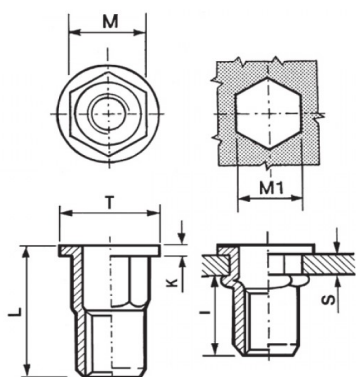


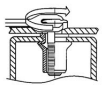
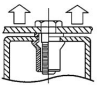
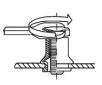
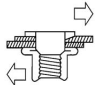


**INSERTI FILETTATI SEMIESAGONALI - TESTA TONDA**  
**SEMI-HEXAGONAL THREADED INSERTS - FLAT HEAD**  
**INSERTS FILETÉS SEMI-HEXAGONAUX - TÊTE CYLINDRIQUE**  
**BLINDNIETMUTTERN TEILSECHSKANT - FLACHKOPF**  
**TUERCAS REMACHABLES SEMI-HEXAGONALES - CABEZA PLANA**



|  | S<br>GRIP | M<br>+0,07/-0,1 | M1<br>+0,1/-0 | T<br>+/-0,5 | K<br>+/-0,15 | L<br>+/-0,5 | I<br>~ |  |
|---|-----------|-----------------|---------------|-------------|--------------|-------------|--------|---|
| M10   | 3.5 - 6   | 11.9            | 12            | 16          | 1.7          | 22          | 10.5   | 50  |

**MATERIAL: STAINLESS STEEL A2**

|  |   |   |   |
|--|---|---|---|
| <br>MAX TIGHTENING<br>TORQUE (Nm)<br>50 | <br>PULL-OUT<br>FORCE (N)<br>32000 | <br>TORQUE TO<br>TURN (Nm)<br>11 | <br>SHEAR<br>FORCE (N)<br>5000 |
|--|---|---|---|

Disegno di proprietà della Fixi S.r.l. - Non può essere copiato, riprodotto o comunicato a terze persone senza autorizzazione.  
 Drawing owned by Fixi S.r.l.- It cannot be copied, reproduced or communicated to third parties without permission.

**Disegnato da / Designed by:** Ufficio Tecnico  
**Ufficio Tecnico / Tech Office:** tech@fixi.it

14/05/2026

**CODICE PRODOTTO / PART NUMBER**

85IXITTSEM10L12

**FIXI®**

FIXI s.r.l. Via Bellardi 40/A  
 10146 - Torino (Italy)  
 www.fixi.it - info@fixi.it