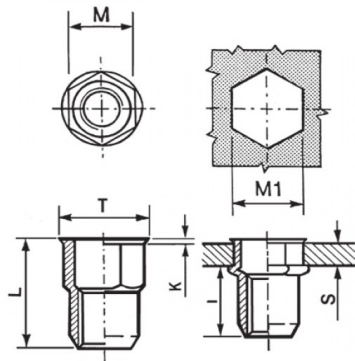




**INSERTI FILETTATI SEMIESAGONALI - TESTA RIDOTTA**  
**SEMI-HEXAGONAL THREADED INSERTS - REDUCED COUNTERSUNK HEAD**  
**INSERTS FILETÉS SEMI-HEXAGONAUX - TÊTE RÉDUITE**  
**BLINDNIETMUTTERN TEILSECHSKANT - KLEINER SENKKOPF**  
**TUERCAS REMACHABLES SEMI-HEXAGONALES - CABEZA REDUCIDA**

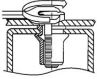
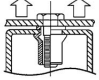
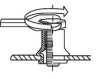
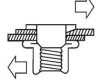


K dopo la posa  
K after setting



|  | S     | M          | M1      | T      | K       | L      | I  |  |
|---|-------|------------|---------|--------|---------|--------|----|---|
|   | GRIP  | +0,07/-0,1 | +0,1/-0 | +/-0,5 | +/-0,15 | +/-0,5 | ~  |   |
| M10   | 1 - 4 | 12.9       | 13      | 14.5   | 0.75    | 21     | 13 | 32  |

**MATERIAL: STAINLESS STEEL A2**

|  |   |  |   |
|--|---|--|---|
| <br>MAX TIGHTENING<br>TORQUE (Nm)<br>32 | <br>PULL-OUT<br>FORCE (N)<br>32000 | <br>TORQUE TO<br>TURN (Nm)<br>8,5 | <br>SHEAR<br>FORCE (N)<br>5000 |
|--|---|--|---|

Disegno di proprietà della Fixi S.r.l. - Non può essere copiato, riprodotto o comunicato a terze persone senza autorizzazione.  
Drawing owned by Fixi S.r.l.- It cannot be copied, reproduced or communicated to third parties without permission.

Disegnato da / Designed by: Ufficio Tecnico  
Ufficio Tecnico / Tech Office: tech@fixi.it

14/05/2026

**CODICE PRODOTTO / PART NUMBER**

**85IXIERSEM10C13**

**FIXI®**

FIXI s.r.l. Via Bellardi 40/A  
10146 - Torino (Italy)  
www.fixi.it - info@fixi.it