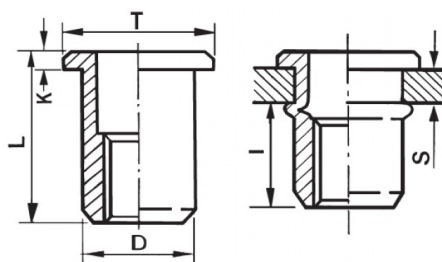





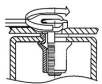
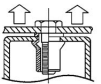
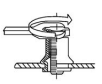
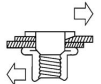
INSERTI FILETTATI CILINDRICI ALLUMINIO - TESTA TONDA
CYLINDRICAL ALUMINIUM THREADED INSERTS - FLAT HEAD
INSERTS FILETÉS CYLINDRIQUES ALUMINIUM - TÊTE CYLINDRIQUE
BLINDNIETMUTTERN RUNDSCHAFT ALUMINIUM - FLACHKOPF
TUERCAS REMACHABLES CILINDRICAS ALUMINIO - CABEZA PLANA



ZIGRINATO SOTTO LA TESTA
KNURLED UNDERNEATH THE HEAD

	S GRIP	D +0,07-0,1		T +0,5	K +0,15	L +0,5	I	
M6	0.5 - 2.5	8.9	9	12,3	1.4	15	9.2	8

MATERIAL: ALUMINIUM AIMg 2,5

 MAX TIGHTENING TORQUE (Nm) 8	 PULL-OUT FORCE (N) 7800	 TORQUE TO TURN (Nm) 3,5	 SHEAR FORCE (N) 2000
---	--	--	---

Disegno di proprietà della Fixi S.r.l. - Non può essere copiato, riprodotto o comunicato a terze persone senza autorizzazione.
 Drawing owned by Fixi S.r.l.- It cannot be copied, reproduced or communicated to third parties without permission.

Disegnato da / Designed by: Ufficio Tecnico
Ufficio Tecnico / Tech Office: tech@fixi.it

14/05/2026

CODICE PRODOTTO / PART NUMBER

85ALITTM06C



FIXI s.r.l. Via Bellardi 40/A
 10146 - Torino (Italy)
 www.fixi.it - info@fixi.it