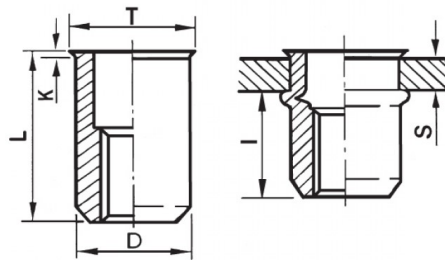





**INSERTI FILETTATI CILINDRICI ALLUMINIO - TESTA RIDOTTA**  
**CYLINDRICAL ALUMINIUM THREADED INSERTS - REDUCED COUNTERSUNK HEAD**  
**INSERTS FILETÉS CYLINDRIQUES ALUMINIUM - TÊTE RÉDUITE**  
**BLINDNIETMUTTERN RUNDSCHAFT ALUMINIUM - KLEINER SENKKOPF**  
**TUERCAS REMACHABLES CILINDRICAS ALUMINIO - CABEZA REDUCIDA**



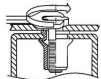
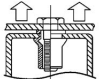
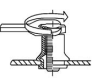
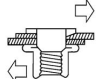
K dopo la posa  
K after setting



**ZIGRINATO SOTTO LA TESTA**  
**KNURLED UNDERNEATH THE HEAD**

	S	D		T	K	L	I	
	GRIP	+0,07-0,1	+0,1/-0	+0,5	+0,15	+0,5	~	
M4	2.5 - 4	5.9	6	7	0.5	13	6	2.5

**MATERIAL:** ALUMINIUM AIMg 2,5

			
MAX TIGHTENING TORQUE (Nm)	PULL-OUT FORCE (N)	TORQUE TO TURN (Nm)	SHEAR FORCE (N)
2.5	4000	0,7	1000

Disegno di proprietà della Fixi S.r.l. - Non può essere copiato, riprodotto o comunicato a terze persone senza autorizzazione.  
Drawing owned by Fixi S.r.l. - It cannot be copied, reproduced or communicated to third parties without permission.

**Disegnato da / Designed by:** Ufficio Tecnico  
**Ufficio Tecnico / Tech Office:** tech@fixi.it

14/05/2026

**CODICE PRODOTTO / PART NUMBER**

85ALITRM04L

**FIXI®**

FIXI s.r.l. Via Bellardi 40/A  
10146 - Torino (Italy)  
www.fixi.it - info@fixi.it