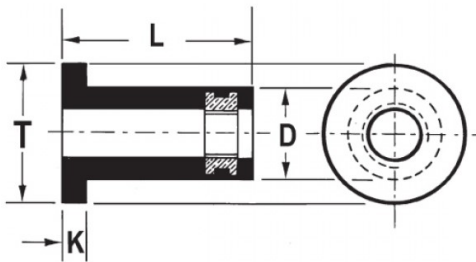





**INSERTI FILETTATI SPECIALI - NEOPRENE / OTTONE  
 SPECIAL THREADED INSERTS - NEOPRENE / BRASS  
 INSERTS FILETÉS SPÉCIAUX - NÉOPRÈNE / LAITON  
 SONDERANFERTIGUNGEN - NEOPREN / MESSING  
 INSERTOS ROSCADOS ESPECIALES - NEOPRENO / LATON**



	S	D +0.1/-0.2	 +0,1/-0	T +/-0.3	K +/-0.3	L +1.0/-0.5	
M5	0.4 - 4.9	9.6	9,8	12.7	0.9	14.1	0.54

**MATERIAL: NEOPRENE-BRASS**

Disegno di proprietà della Fixi S.r.l. - Non può essere copiato, riprodotto o comunicato a terze persone senza autorizzazione.  
 Drawing owned by Fixi S.r.l.- It cannot be copied, reproduced or communicated to third parties without permission.

**Disegnato da / Designed by:** Ufficio Tecnico  
**Ufficio Tecnico / Tech Office:** tech@fixi.it

14/05/2026

**CODICE PRODOTTO / PART NUMBER**

85RN515

**FIXI®**

FIXI s.r.l. Via Bellardi 40/A  
 10146 - Torino (Italy)  
 www.fixi.it - info@fixi.it