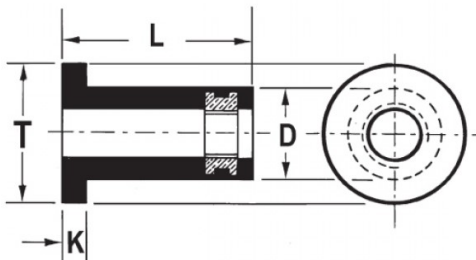





**INSERTI FILETTATI SPECIALI - NEOPRENE / OTTONE
 SPECIAL THREADED INSERTS - NEOPRENE / BRASS
 INSERTS FILETÉS SPÉCIAUX - NÉOPRÈNE / LAITON
 SONDERANFERTIGUNGEN - NEOPREN / MESSING
 INSERTOS ROSCADOS ESPECIALES - NEOPRENO / LATON**



	S	D +0.1/-0.2	 +0,1/-0	T +/-0.3	K +/-0.3	L +1.0/-0.5	
M5	20.5 - 30	9.6	9,8	14	1.3	39.0	1.14

MATERIAL: NEOPRENE-BRASS

Disegno di proprietà della Fixi S.r.l. - Non può essere copiato, riprodotto o comunicato a terze persone senza autorizzazione.
 Drawing owned by Fixi S.r.l.- It cannot be copied, reproduced or communicated to third parties without permission.

Disegnato da / Designed by: Ufficio Tecnico
Ufficio Tecnico / Tech Office: tech@fixi.it

14/05/2026

CODICE PRODOTTO / PART NUMBER

85RN541

FIXI®

FIXI s.r.l. Via Bellardi 40/A
 10146 - Torino (Italy)
 www.fixi.it - info@fixi.it