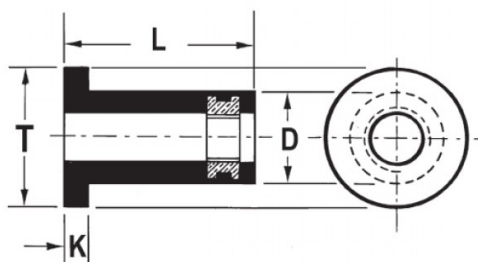





**INSERTI FILETTATI SPECIALI - NEOPRENE / OTTONE**  
**SPECIAL THREADED INSERTS - NEOPRENE / BRASS**  
**INSERTS FILETÉS SPÉCIAUX - NÉOPRÈNE / LAITON**  
**SONDERANFERTIGUNGEN - NEOPREN / MESSING**  
**INSERTOS ROSCADOS ESPECIALES - NEOPRENO / LATON**



|  | S       | D         |  | T      | K      | L         |  Nm |
|---|---------|-----------|---|--------|--------|-----------|--|
| M8  | 0.4 - 4 | +0.1/-0.2 | +0,1/-0   | +/-0.3 | +/-0.3 | +1.0/-0.5 | 2.82   |

**MATERIALE: NEOPRENE-OTTONE**

Disegno di proprietà della Fixi S.r.l. - Non può essere copiato, riprodotto o comunicato a terze persone senza autorizzazione.  
 Drawing owned by Fixi S.r.l.- It cannot be copied, reproduced or communicated to third parties without permission.

**Disegnato da / Designed by:** Ufficio Tecnico  
**Ufficio Tecnico / Tech Office:** tech@fixi.it

03/05/2026

**CODICE PRODOTTO / PART NUMBER**

85RN822

**FIXI®**

FIXI s.r.l. Via Bellardi 40/A  
 10146 - Torino (Italy)  
 www.fixi.it - info@fixi.it